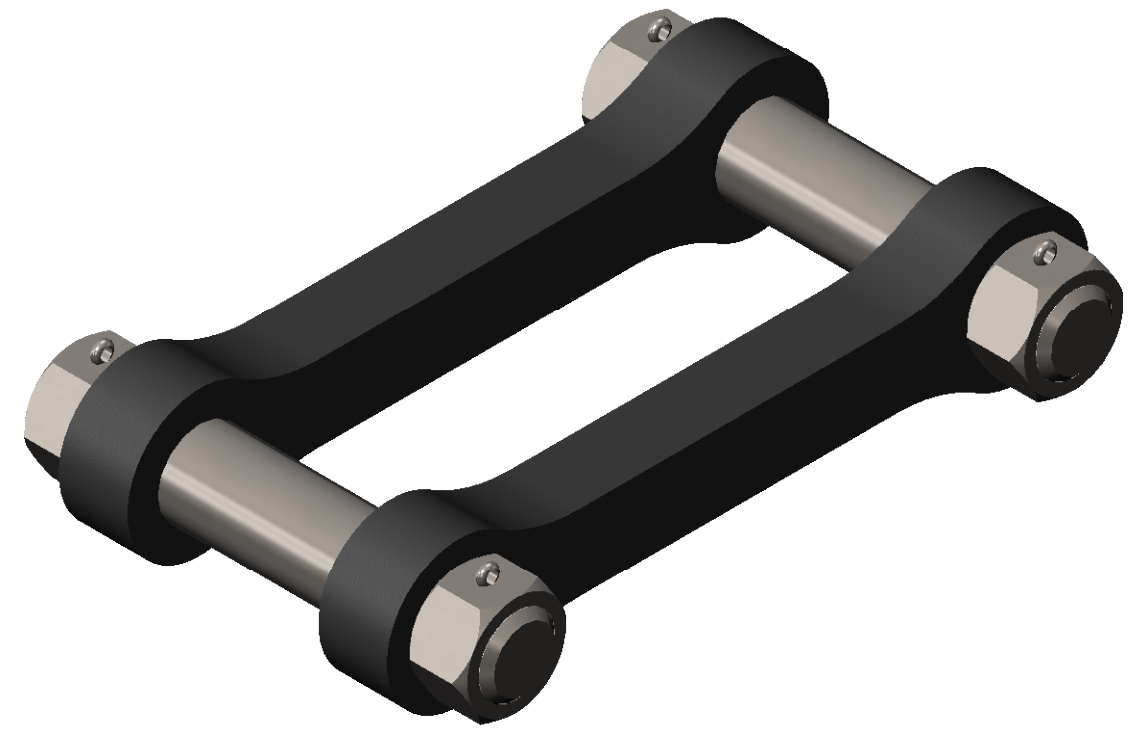
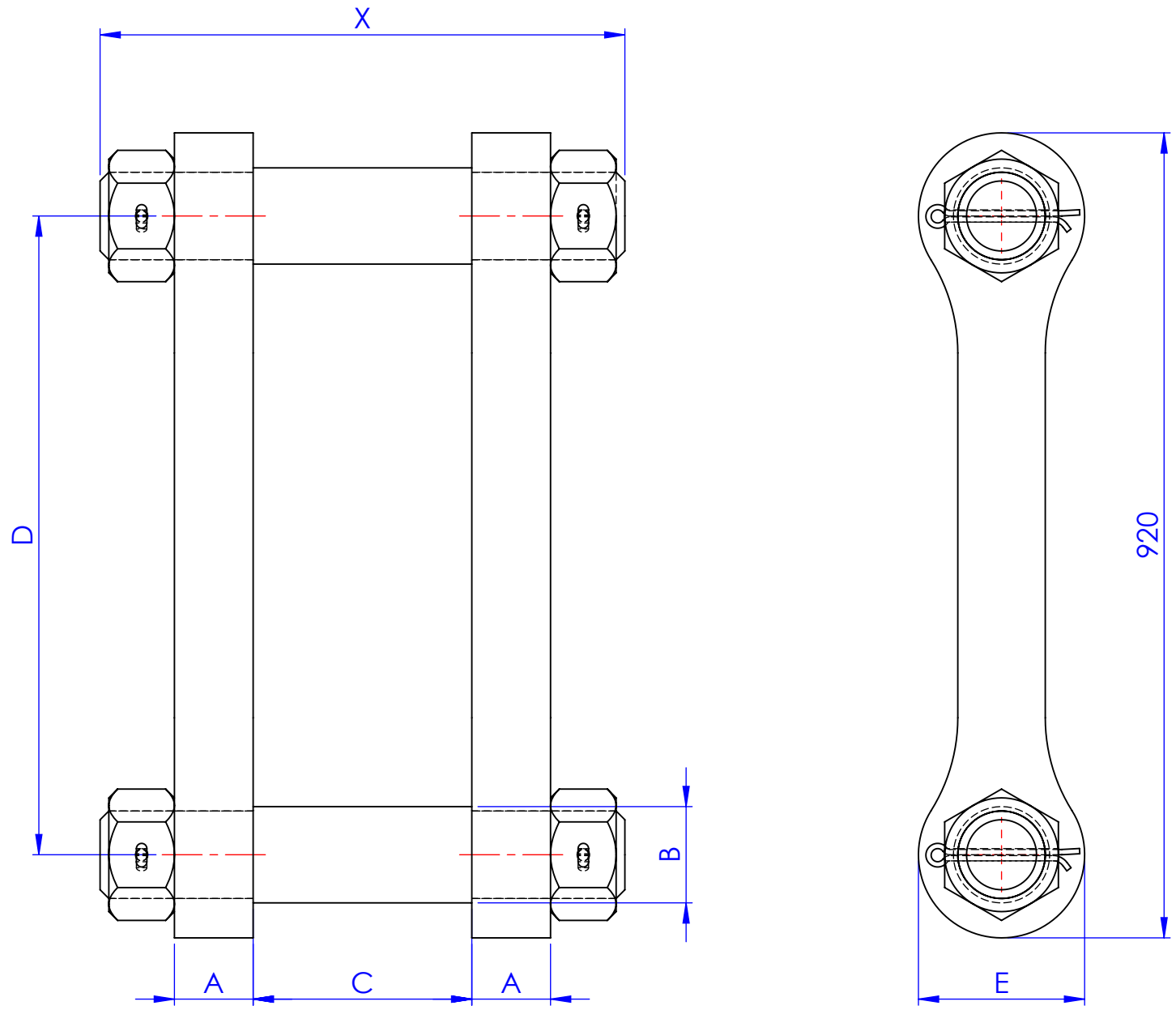


8 7 6 5 4 3 2 1

F
E
D
C
B
A

F
E
D
C
B
A




NOTE:

ENSURE THAT THE LOAD IS IN THE CENTRE OF THE PIN. WHEN THERE IS TOO MUCH SPACE IN THE JAW GAP, WE ADVISE TO USE WASHERS.

Material	Body: High tensile steel Pin: Alloy steel quenched and tempered
Finish	Painted
Temperature range	-20°C up to +200°C
Standard certification	Certificate of Conformity 3.1 material certificate EN10204
Non-standard sizes or custom products available on request	

Thimble size inch	MBL ton	PL ton	A mm	B mm	C mm	D mm	E mm	X mm	Y mm	Weight Kg	Product group code:
12	500	300	90	110	170	540	190	520	750	211	CMDPSS12001
15	500	300	90	110	200	540	190	550	750	216	CMDPSS15001
18	500	300	90	110	225	710	190	575	920	244	CMDPSS18001
21	500	300	90	110	250	710	190	600	920	250	CMDPSS21001

Tolerance: Machined parts ± 1mm



OFFSPRING INTERNATIONAL LIMITED
UNIT 8, CASTLE COURT2
CASTLEGATE WAY
DUDLEY, WEST MIDLANDS
DY1 4RH. UK

DO NOT SCALE DRAWING REVISION 01

REVISION NOTES:
01: FIRST ISSUE FOR QUOTATION
02: XXXX
03: XXXX

DRAWING TITLE:
DOUBLE PIN SNORTER SHACKLE

DWG NO. **OIL-04000012** A3

SCALE: N.T.S. SHEET 1 OF 1

NAME	SIGNATURE	DATE	TEL:	+44 (0) 1384 453880
DRAWN	C.LEE	23/03/2016	FAX:	+44 (0) 1384 453888
CHK'D	M.BROOKS	XXXX	EMAIL:	mail@offspringinternational.com
APPV'D	M.BROOKS	XXXX	THIS DRAWING IS FOR INFORMATION ONLY	
MFG	XXXX	XXXX		
Q.A	XXXX	XXXX		
FINISH	PAINTED		BODY: HIGH TENSILE STEEL PIN: HIGH ALLOY STEEL	

© 2015 Offspring International. All rights of reproduction reserved

8 7 6 5 4 3 2 1